

Introduction to the IRAP Digital Commons

1. What is the IRAP Digital Commons?

The IRAP Digital Commons is a database environment created specifically for the IRAP team to facilitate the creation of ad-hoc datasets based on University of California Data Warehouse (UCDW) production data in combination with externally sourced enrichment data. It will allow the merging of data from various subject areas within UCDW and the potential merging of UCDW data with external data like IPEDS and EDD to create rich data that will help speed up the timeline between the acquisition of data and analyses and the publication of information. This environment is also intended to provide some empowerment, independence and self-service to IRAP Data Scientists.

2. What database schemas are available within the IRAP Digital Commons?

- A. **Personal Schemas** – schemas that contain objects that you create. These will be named based on your username. For example, SSANGAM, CFURGIUE and RCHAN.
- B. **Production Schemas (Federated Schemas)** – schemas that are visible in the commons from the production environment. For example, STUD_BI, UAD_BI and FINANCIAL.
- C. **Native Common/Shared Schemas** – schemas that have been specially created within the digital commons that allow IRAP to share data while maintaining security such that access is managed on a need-to-know basis:
 - a. **IRAP_DB** – common schema that houses objects available to all
 - b. **EDD_NSC_DATA** – special schema for EDD and NSC data
 - c. **IRAP_DATA_EXTRACTS** – special schema for data extracts sent out to third parties
 - d. **IRAP_REF_DATA** – special schema for data related to the reference data management system
 - e. **PAY_PERS_DATA** – special schema for payroll and personnel data
 - f. **IRAP_SURVEY_DATA** – special schema for survey-related data
 - g. **IRAP_CDE_DATA** – special schema for Department of Education data

3. What are the access levels that have been created for the IRAP Digital Commons?

- A. **Data Access Level (What a User Can See)**: The production tables users can see within the IRAP Digital Commons are available using the same level of security that has been granted for the regular production environments regarding the Student, Payroll/Personnel, Financial and Contracts and Grants. For e.g. if a user had no prior access to the financial data, they may see the financial objects in the commons but they will get an error when they try to access them.
- B. **Privilege Access Level (What a User Can Do)**: What a user can do within the federated environment.

4. What are the access levels that have been created for the IRAP Digital Commons?

- I. IRAP_PERSONAL_USER
- II. IRAP_DEV
- III. IRAP_AEO_DEV:
- IV. IRAP_AEO_USER:
- V. IRAP_HR_USER
- VI. IRAP_HR_DEV
- VII. IRAP_SURVEY_USER
- VIII. IRAP_SURVEY_DEV
- IX. IRAP_CDE_DEV
- X. IRAP_CDE_USER

NOTE: Users will be assigned one or more roles depending on the work they do.

5. How does the current access in the UCDW production environment come into play?

The access to the federated tables from the production environments – UCDW Production (DWP2) and the Alumni Employment Outcomes (AEO) remains the same in the Digital Commons as it is in the production environment.

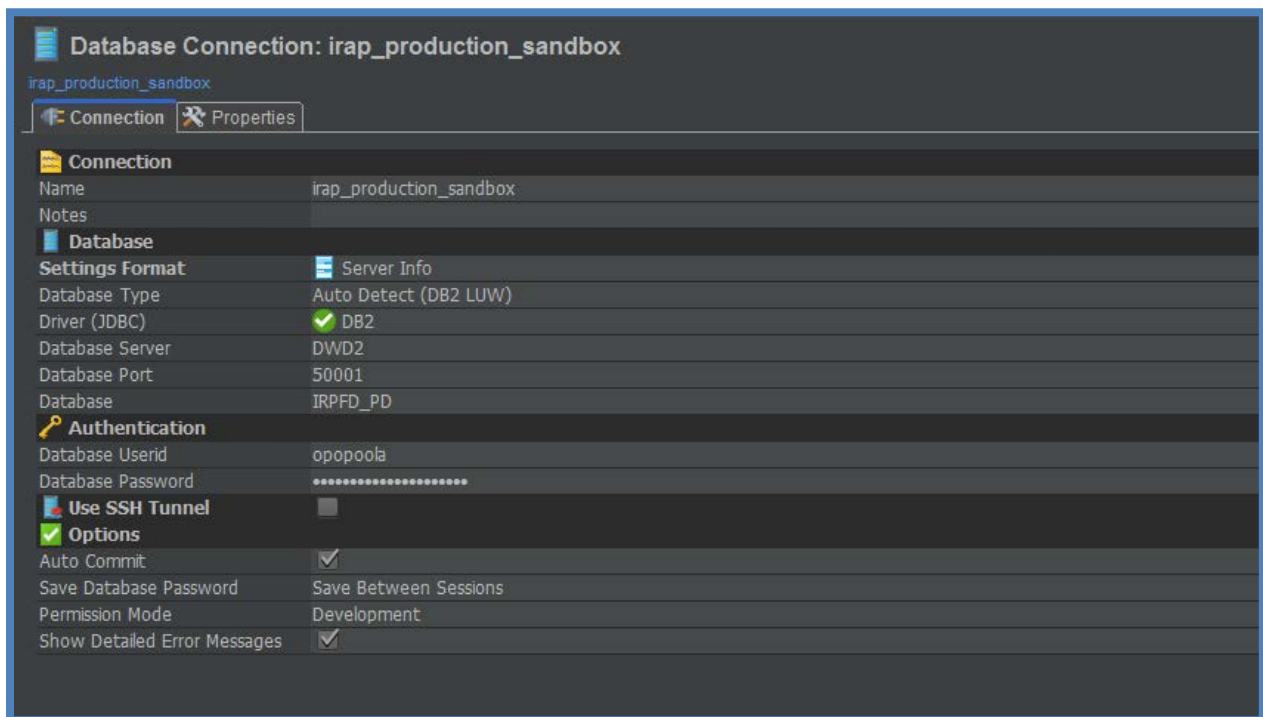
There is absolutely no expectation that staff will have access to federated objects in the Digital Commons that they do not have access to in the production environments.

6. How do I get access to the IRAP Digital Commons?

Have your supervisor send an email to ola.popoola@ucop.edu. The email should indicate what roles you should have within the commons.

7. After I get access, how do I configure DB Visualizer to enable my connection to the IRAP Commons?

- A. If you have not installed DB Visualizer, please visit: <http://data.ucop.edu/support-training/how-to-files/Connecting%20to%20UCDW%20Through%20DB%20Visualizer.pdf> for instructions on how to download the software. You will need to contact the Service Desk to get administrative rights to your PC to install the software. Contact the Service Desk if needed via email (servicedesk@ucop.edu) or call 70457 option 2.
- B. Once DB Visualizer is installed, configure the tool using the following parameters:
- o Driver = DB2
 - o Database Server = DWD2
 - o Port = 50001
 - o Database = IRPFD_PD



If you have any issues configuring DB Visualizer or access to the commons post software installation, please connect with:

1. Poorani – Poorani.Rajamanickam@ucop.edu
2. Sanketh – Sanketh.Sangam@ucop.edu